

Bovingdon Gardeners



Established 1927

2025 YEARBOOK

SPRING SHOW	SATURDAY 29th MARCH
SUMMER SHOW	SATURDAY 28th JUNE
AUTUMN SHOW	SATURDAY 13th SEPTEMBER
VENUE	BOVINGDON MEMORIAL HALL

Staging of Exhibits	8.30 AM – 10.30 AM
Public Viewing	2.30 PM – 4.00 PM
Prize Giving	4.00 PM



www.shantocknurseries.co.uk
Tel: 01442 967442
Email: info@shantocknurseries.co.uk



Shantock
Nurseries
Ltd

LOCALLY GROWN

SHANTOCK LANE, BOVINGDON, HERTFORDSHIRE, HP30NG

**ALL OUR BEDDING, VEGETABLE, AND A LARGE RANGE OF
PERENNIALS ARE GROWN LOCALLY.**

WE ALSO SUPPLY A RANGE OF
SHRUBS ~ CLIMBERS ~ COMPOST ~ HANGING BASKETS ~ HOUSE PLANTS
~ CHRISTMAS TREES ~ HANDMADE WREATHS ~ PLANT FEED ~ COMPOST

OPEN FOR RETAIL AND TRADE 7 DAYS A WEEK

WE PRIDE OURSELVES IN SUPPLYING AMAZING SERVICE, PRODUCTS AND
EXCELLENT VALUE FOR MONEY



**Bovingdon Gardeners formerly
Bovingdon & district Horticultural Society**

2025 CALENDAR OF EVENTS

29 th March	Spring Show
10 th May	Plant Sale
28 th June	Summer Show
Tba	Visit to RHS Wisley, free entry
13 th September	Autumn Show
14 th November	Society Social Evening

For 2025, the Committee are planning to bring back the Plant Sale.

Full details of the above events and any others including talks planned to take place during the coming year will be on the Society Website www.bovingdonhortsoc.org.uk as well as in our Newsletters and email news updates distributed during the year. As in the past, outings will be subject to sufficient numbers.

The Website continues to develop and increasingly carries more information together with an archive of the Society's activities and documents. Save it in your Bookmarks.

To receive email news updates send your name and email address to editor@bovingdonhortsoc.org.uk marking Subject "Subscribe". Your email address is not made available to other members or any other party. **If you change your email address be sure to send us the new one to bovingdongardeners@gmail.com.**

Membership £5.00 per household for one year (£7.00 if postal delivery is required) due on 1st January.

OFFICERS OF THE COMMITTEE

Chair	Gillian Johansson	Tel. 833766
	chair@bovingdonhortsoc.org.uk	
Secretary	Vacant	
	secretary@bovingdonhortsoc.org.uk	
Treasurer	John Walker	Tel. 968593
	treasurer@bovingdonhortsoc.org.uk	
Membership Secretary	Mike Leon	Tel. 833665
	membership@bovingdonhortsoc.org.uk	

(All tel. numbers are area code 01442)

BENEFITS OF MEMBERSHIP

- **Reduced fees** for entries in the Society's Shows.
- **Discounts** for outings organised by the Society and for talks by guest speakers and other events.
- **Discounted purchases** from Thompson and Morgan; 50% discount for seeds and 15% off other live plants including potatoes, garlic, shallots, onions, plant bulbs and fruit. Order direct from T&M (by post, phone or online) quoting code **TM_GT187M**. You can use this code as many times as you wish throughout the 2024/25 season.
- The Society is affiliated to Royal Horticultural Society, National Vegetable Society and National Daffodil Society.
- RHS membership entitles Bovingdon Gardeners to organise an annual visit to one on the RHS sites with free entry.
- Additionally, RHS have provided a discount card for 2 people to visit at half price. If you would like to use the card please contact chair@bovingdonhortsoc.org.uk 01442 833766 giving the date you wish to visit. Please be sure to return the discount card after your visit so that it is available for other members.

Edited by Ron Smith
editor@bovingdonhortsoc.org.uk tel. 01442 832311
Published by Bovingdon Gardeners, © Dec. 2024

The following supplier will give discounts of up to 10% on garden supplies or other specified goods. Please show current Membership Card and support the local suppliers.

W Jarman & Sons, 44 High Street, Bovingdon - Tel. 832141
10% discount on horticultural supplies

Previous Cup & Medal Winners

Spring Show 2024	Summer Show 2024	Autumn Show 2024
Wildacre Cup	Banksian Medal	Ernest Wright Cup
Gillian Johansson	Mavis Lawrence	Mike Leon
Daffodil Society Medal	Bovingdon Hort Soc Cup	Victory Hall Cup
Gillian Johansson	Mike Leon	Doug Leslie
Langley Leisure Cup	NVS Vegetable Medal	Dahlia Cup
Mavis Lawrence	Mike Leon	Debbie Oastler
Challenge Cup	Mollie Aronson Cup	Chrysanthemum Cup
Linda Comerford	Gillian Johansson & Claire Winter	Not awarded
Pendley Estates Trophy	Darley Ash Cup	Allday Roofing Cup
Susan Chester	Debbie Oastler	Dave Billington
Junior Prize Certificates	Floral Art Voucher	Outspan Cup
Zara Johansson	Ann Stephen	Mavis Lawrence
	Crawley Cup	Bovingdon Hort Soc Bowl
	Anne Tavener	Glenys Welstead
	Small Challenge Certificates	Horwood Bakery Cup
	Zara Johansson, Sophie	Sylvia Simmonds
	Douglas King Cup	Copse Hill Challenge Cup
	Lloyd Moore	Val Rolls
		Eva Stone Cup
		John Walker

RULES FOR EXHIBITORS

1. Entries must be on an Official Entry Form from the Year Book or obtainable from W. Jarman & Sons, 44 High Street, Bovingdon and delivered to Jarmans with the relevant fee (in a sealed envelope marked 'Bovingdon Gardeners') by **12 noon on the Thursday prior to the show. No late entries will be accepted.**
2. Fees: **50 pence per entry, discounted to 25 pence for members.**
3. Entry is free for children (i.e. up to and including 15 years of age) and children's ages on Show Day must be marked on the entry form.
4. No exhibitor will be allowed to take more than one prize per class, although up to three entries may be made in each class.
5. All exhibits must be staged between **8.30 a.m. and 10.30 a.m.** on Show Day, at which time the hall will be cleared for judging. Exhibits are then to remain on show until 4.30 p.m.
6. All awards are at the Judges' discretion and prizes may be withheld or modified if exhibits are not considered worthy of the class prize. **The Judges decisions are final.**
7. The Committee does not accept responsibility for any exhibit lost or damaged.
8. All Cups and Bowls remain the property of the Society.
9. (i) All exhibits in Sections I, II and III in the Spring and Summer Shows plus V and VI in the Autumn Show must have been grown by the exhibitor or have been in his or her possession for at least 8 weeks.
(ii) Handicrafts and paintings must be the exhibitors' own work and must not have been exhibited previously. There should be **no visible signature or identification.**
(iii) Children's drawings and designs must be originals.
(iv) In Floral Art classes the width must not exceed the dimension given for that particular class. Bases may be used. **Oasis is no longer permitted.**
(v) A "bowl" is a container whose diameter at its mouth is equal to or greater than its height.
(vi) A "vase" is a container whose height is greater than its diameter.
(vii) Exhibitors to state variety of plant where known.
10. In the event of two or more exhibitors gaining an equal number of points, the cup/medal will be awarded to the exhibitor gaining the highest number of first places. Should this not produce an outright winner, the number of second, then third, places will be considered.

Note there have been further modifications to the schedules for 2025.

Please check individual classes for details.

PRIZES

We will no longer give cash prizes.

These will be replaced with Certificates for 1st, 2nd and 3rd class winners.

Certificate will continue to be awarded to the Cup Winners.

HINTS AND TIPS FOR EXHIBITORS

We are always looking for new exhibitors in all classes and we will give help and advice prior to Shows and during staging. You learn by exhibiting and you never know, you may win a prize. The more exhibitors there are, the more interesting the Show becomes to visitors and the more rewarding the first prize becomes. "First timers" who require assistance should not hesitate to contact the Show Secretary for help. Read the schedule carefully. Stage early. Check the class number of the schedule, this will correspond with the number on the tables. If in doubt, ask a steward.

Naming of exhibits is not compulsory, except where specifically stated. However, it will help the judges and add generally to the interest of your exhibit if you can name the variety or varieties of which it consists.

The following additional advice may be useful: -

(a) Vegetables and Fruit

Uniformity of size, shape, colour and variety is important. Exhibits should be clean and as fresh as possible, but stalks should not be removed. Wash vegetables with a soft cloth or sponge so as not to damage the skin. Only the outer skins of onions should be removed. Beans should be straight, fresh and of even size. Cutting with scissors minimises damage when picking fruit. The natural bloom on fruit gains points. Avoid undue handling and do not wash. Exhibits are judged under the rules of the National Vegetable Society.

(b) Floral Art

It is very important that the stated dimensions are not exceeded (max. width and depth 24"). Bases and drapes may be used with arrangements and exhibits, only the latter may contain accessories - other non plant items. The Society's niches are 30" wide and 15" deep, made of white correx. Whatever water retaining material is used, it should not be visible. **Oasis is not allowed.** Suggested eco-friendly alternatives are agra wool, moss, chicken wire, pin holders, sand or gravel.

(c) Flowers

The Society provides the vases for displaying flowers/flower collections unless otherwise stated. Exhibitors using their own vases or containers do so at their own risk. All flowers should be fresh. Stems should be supported using moss, newspaper or other packing material, **but not Oasis.** Good arrangement, colour blending, lightness and balance gain more points. Overcrowding loses points. In Dahlia classes particularly, the size of the flower is important. Please check size before placing your vase on the show bench.

(d) Preserves and Cooking

For preserves, **jars should be perfectly clean with no trade names on the glass or tops.** They should be filled to the top. Air bubbles can be avoided if the jar is held at an angle whilst filling. Once filled this seal should not be replaced for showing. Fruit cakes are best made 2 days before the show. When the Schedule gives a recipe or states the size of the tin, this should be strictly followed or the entry will be penalised and may be disqualified. Scones and Victoria sponges should be very lightly baked and pale in colour.

Assistance can be given if there is any confusion concerning the appropriate class in which to enter an exhibit.



www.communityrenewables.co.uk

We pick up in Bovingdon each Monday afternoon

Cardboard	Wires
Electronics	Cardboard
Metal	Batteries
Books	Phones
Game consoles	Small furniture

Please contact Nic to arrange a free collection

TALKS

Talks and Outings are being arranged and details will be circulated as soon as they are confirmed in the Newsletters on the website and by email.

Talks are in the Bovingdon Baptist Hall starting 7:30 pm

Table of Quantities and Points for Vegetable Collections

Note some quantities have been reduced.

Vegetable	No	Pts	Vegetable	No	Pts

Aubergines	3	18	Leeks	2	20
Artichokes (Jerusalem)	2	10	Lettuce	2	15
Artichokes (Globe)	2	15	Marrows (inc. Squash)	1	15
Beans (Broad)	6	15	Onions (over 250 grams)	3	20
Beans (Dwarf, Climbing, French or Stringless)	6	15	Onions (under 250 grams)	3	15
Beans (Runner)	6	18	Onions (Pickling)	6	12
Beetroot (Globe)	3	15	Shallots (Pickling)	6	15
Beetroot (Long)	3	20	Shallots (Exhibition)	6	18
Broccoli	2	15	Spring Onions	6	12
Brussel Sprouts	9	15	Parsnips	2	20
Cabbage	2	15	Pea (Pods)	6	20
Capsicums	3	15	Potatoes	4	20
Carrots (Long pointed)	3	20	Pumpkin	1	10
Carrots (Stump rooted)	3	18	Radishes	6	10
Cauliflowers	2	20	Rhubarb	3	12
Celeriac	3	15	Swedes	2	15
Celery (Blanched)	2	20	Sweet Corn	2	18
Celery (Self-blanched)	2	18	Tomatoes (large Beefsteak)	3	15
Courgettes	3	12	Tomatoes (medium)	5	18
Cucumbers (House/Frame)	1	18	Tomatoes (small and cherry)	9	12
Cucumbers (Ridged/Outdoor)	1	15	Turnips	2	15
Kohl Rabi	3	12			

UNDERWOODS

SOLICITORS

Quality without compromise

**Appointments at our Bovingdon
Office or online are available**

We can help with:

- Wills, Probate & Powers of Attorney*
- Legal Disputes†
- Business Matters†

**Talk to us, not a robot on
01442 430 900 or email**

†kerry.underwood@lawabroad.co.uk

***leah.waller@lawabroad.co.uk**

www.underwoods-solicitors.co.uk

Underwoods Solicitors is a trading name of
Law Abroad Ltd

SPRING SHOW - SATURDAY 29th March

Show Secretary: Gillian Johansson, tel. 01442 833766
spring@bovingdonhortsoc.org.uk

1. THE WILDACRE CUP awarded to the exhibitor gaining the most points in Sections I, II and III.
2. THE DAFFODIL SOCIETY MEDAL for the best daffodil exhibit in Show.
3. THE LANGLEY LEISURE CUP for the most points in Section II.
4. **NEW** The WOODLANDS CUP for the most points in Section III.
5. THE CHALLENGE CUP awarded for the best exhibit in Section V.
6. THE PENDLEY ESTATES TROPHY awarded for the best exhibit in Section VI.
7. THE JUNIOR PRIZE Certificate for the most points in Section VII.

SECTION I – DAFFODILS

The names of the daffodil varieties may be displayed.

Oasis is no longer permitted.

No.	Colour	Description
Novice		Not previously a daffodil winner
200	All Yellow	3 blooms – one or more varieties

Division 1 - Trumpet Daffodils

One flower to a stem; trumpet as long as, or longer than the petals.

No.	Colour	Description
201	All Yellow	1 specimen bloom
202	All Yellow	3 blooms - one or more varieties
203	All White	1 specimen bloom
204	All White	3 blooms - one or more varieties
205	Bi/multi-colour	1 specimen bloom
206	Bi/multi-colour	3 blooms - one or more varieties

Division 2 - Large Cupped Daffodils

One flower to a stem; cup more than 1/3, less than equal to the length of petals.

No.	Colour	Description
207	All Yellow	1 specimen bloom
208	All Yellow	3 blooms - one or more varieties
209	All White	1 specimen bloom
210	All White	3 blooms - one or more varieties
211	Bi/multi-colour	1 specimen bloom
212	Bi/multi-colour	3 blooms - one or more varieties

CLASSIFICATION OF DAFFODILS

By the RHS

Division 1 – Trumpet Daffodils

One flower to a stem; trumpet as long as or longer than petals



Division 2 – Large Cupped Daffodils

One flower to a stem; cup more than 1/3, but less than equal to length of petals



Division 3 – Small Cupped Daffodils

One flower to a stem; cup not more than 1/3 length of petals



Division 4 – Double Daffodils

One or more flowers to a stem, with doubling of petals or cup or both



Division 5 – Triandrus Daffodils

Usually, 2 or more pendant fragrant flowers to a stem, petals reflexed



Division 6 – Cyclamineus Daffodils

One flower to a stem; petals significantly reflexed, flower at acute angle to stem with very short neck



Division 7 – Jonquilla Daffodils

Usually, 1 to 5 fragrant flowers to a rounded stem; narrow leaves petals spreading or reflexed.



Division 8 - Tazetta Daffodils

Usually, 3 to 20 fragrant flowers to a stout stem; leaves broad, petals spreading, not reflexed



Division 9 – Poeticus Daffodils

One fragrant flower to a stem; petals pure white, cup very short or disc shaped, not more than 1/5 the length of petals, cup usually green and/or yellow centre and red rim, anthers usually set at 2 distinct levels

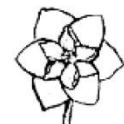


Division 11 – Split Corona Daffodils

Cup split, usually for more than half its length, 2 types: -**Collar**; cup segments opposite petal segments, usually in 2 whirls of 3



Papillon; cup segments alternate to petal segments, usually in a single whirl



Division 3 - Small Cupped Daffodils

One flower to a stem; cup not more than 1/3 of the length of the petals.

No.	Colour	Description
215	Any colour combination	1 specimen bloom
216	Any colour combination	3 blooms - one or more varieties

Division 4 - Double Daffodils

One or more flowers to a stem, with doubling of the petals or cup or both.

No	Description
217	1 specimen stem
218	3 stems - one or more varieties
219	6 stems - one or more varieties

Division 5 - Triandrus Daffodils

Usually, 2 or more pendant fragrant flowers to a stem, petals reflexed.

No.	Description
220	1 specimen stem
221	3 stems - one or more varieties

Division 6 - Cyclamineus Daffodils

One flower to a stem; petals significantly reflexed, flower at an acute angle to the stem, with a very short neck.

No.	Description
222	1 specimen bloom
223	3 blooms - one or more varieties

Division 7 - Jonquilla Daffodils

Usually 1 to 5 fragrant flowers to a rounded stem; narrow leaves, petals spreading or reflexed flowers.

No.	Description
224	1 specimen stem
225	3 stems - one or more varieties

Division 8 – Tazetta Daffodils

Usually, 3 to 20 fragrant flowers to a stout stem; leaves broad, petals spreading, not reflexed.

No.	Description
226	1 specimen stem
226A	1 Falconet specimen stem
227	3 stems - one or more varieties

Division 9 – Poeticus Daffodils

One fragrant flower to a stem; petals pure white, cup very short or disc shaped not more than 1/5 the length of petals, cup usually with green and/or yellow centre and red rim, anthers usually set at 2 distinct levels.

No.	Description
228	1 specimen bloom
229	3 blooms - one or more varieties

Division 11 - Split Corona Daffodils

Cup split usually for more than half of its length; 2 types: - **Collar** – cup segments opposite petal segments, usually in 2 whirls of 3; **Papillon** – cup segments alternate to the petal segments, in a single whirl

No.	Description
230	1 specimen bloom – collar or papillon
231	3 blooms - one or more varieties– collar or papillon
232	6 blooms - one or more varieties– collar or papillon

Divisions 1-11 – Mixed Daffodils

No.	Description
233A	1 vase of any 6 daffodils - one or more varieties
233B	1 vase of any 12 daffodils - one or more varieties

Intermediate and Miniature Daffodils

Intermediate daffodils: **between 51 and 80mm diameter**

No.	Description
234A	1 stem any variety - Intermediate
234B	3 stems - one or more varieties - Intermediate

Miniature daffodils: **up to 50mm in diameter**

No.	Description
234C	1 stem any variety - Miniature
234D	3 stems - one or more varieties - Miniature

SECTION II - OTHER FLOWERS

No.	Description	Quantity
235	Tulip	1 stem
235A	Tulips	3 stems, 1 variety
235B	Tulips	3 stems, mixed varieties
236	Muscari (Grape Hyacinths)	6 stems
237	Polyanthus	3 stems
237A	Hyacinth	1 stem
238	Any other flower	3 stems
239	Forsythia	3 sprays
240	Snake's Head Fritillaries	3 stems

SECTION III - PLANTS (POT GROWN)

No.	Description
242	Any bulbs except daffodil, <i>e.g. hyacinth/tulip</i>
243	Foliage, <i>e.g. houseplant</i>
244	Cactus or succulent
245	Any other flowering plant, <i>e.g. African violet</i>

SECTION V - HANDICRAFTS

No.	Description
249	Hand knitted or crocheted article
250	A needlecraft article (not knitted)
251	Any other craft article, <i>e.g. wood or metal work</i>
252	An article using repurposed/upcycled materials

SECTION VI - PAINTINGS/ART

All paintings may be in any medium except where stated below, max. 24", 61cm prepared for hanging; dimensions to include frame if used; there should be no visible signature or identification.

No.	Description
253	Novice entrant (not having won a prize in the last 3 years), any subject below
254	"A Country Lane"
255	"In the Shadows"
256	"A Ruin"

SECTION VII - CHILDREN'S EXHIBITS

Classes 257 to 258 are open to any children under 15; the child's age will be taken into consideration when judging each entry.

No.	Description
257	5 daffodils in a pot
258	A model in Lego or Duplo, not a kit. Max 10 in x 10 in, 25cm x 25cm



Little Heath Farm Nursery and Tearoom

AN OASIS OF CALM AND SERENITY

"HERTFORDSHIRE'S BEST KEPT SECRET."

The Berko Loop

**We specialise in alpines,
herbaceous perennials, shrubs,
herbs and ferns with uncommon
varieties found throughout.**

Visit our cosy Tearoom!

**Enjoy a hot lunch or sumptuous Full
Afternoon Tea beneath the pergola.**

**Summer opening times: 10.30 to 5pm
Winter hours (daylight saving period) closing 4pm**

Closed Mondays (unless a Bank Holiday)



Virtual tour of
Little Heath Nursery

Telephone: 07834 200 789

E: plants@littleheathfarmnursery.co.uk

W: littleheathfarmnursery.co.uk

IG: [littleheathfarmnursery](https://www.instagram.com/littleheathfarmnursery)

Tearoom bookings 07768 390 681

ENTRY FORM

Spring Show – 29th March

Entries, together with the relevant fee, should be placed in a sealed envelope marked "*Bovingdon Gardeners*" and handed to Jarman & Sons by noon on Thursday, 27th March.

ENTRY FORM

Summer Show – 28th June

Entries, together with the relevant fee, should be placed in a sealed envelope marked "*Bovingdon Gardeners*" and handed to Jarman & Sons by noon on Thursday, 26th June.

ENTRY FORM

Autumn Show – 13th September

Entries, together with the relevant fee, should be placed in a sealed envelope marked "*Bovingdon Gardeners*" and handed to Jarman & Sons by noon on Thursday, 11th September.

SPRING SHOW
29th March

Class Nos.

SUMMER SHOW
28th June

Class Nos.

AUTUMN SHOW
13th September

Class Nos.

One entry form per person

I wish to enter the above classes.
A fee of £
is enclosed.
(Price per class: 50p non-members;
25p members; children under 15 free)

NAME(Caps)

Membership No.

ADDRESS

PHONE
AGE (if under 15)

One entry form per person

I wish to enter the above classes.
A fee of £
is enclosed.
(Price per class: 50p non-members;
25p members; children under 15 free)

NAME(Caps)

Membership No.

ADDRESS

PHONE
AGE (if under 15)

One entry form per person

I wish to enter the above classes.
A fee of £
is enclosed.
(Price per class: 50p non-members;
25p members; children under 15 free)

NAME(Caps)

Membership No.

ADDRESS

PHONE
AGE (if under 15)

SPRING SHOW
29th March

Class Nos.

SUMMER SHOW
28th June

Class Nos.

AUTUMN SHOW
13th September

Class Nos.

One entry form per person

I wish to enter the above classes.
A fee of £
is enclosed.
(Price per class: 50p non-members;
25p members; children under 15 free)

NAME(Caps)

Membership No.

ADDRESS

PHONE
AGE (if under 15)

One entry form per person

I wish to enter the above classes.
A fee of £
is enclosed.
(Price per class: 50p non-members;
25p members; children under 15 free)

NAME(Caps)

Membership No.

ADDRESS

PHONE
AGE (if under 15)

One entry form per person

I wish to enter the above classes.
A fee of £
is enclosed.
(Price per class: 50p non-members;
25p members; children under 15 free)

NAME(Caps)

Membership No.

ADDRESS

PHONE
AGE (if under 15)

ENTRY FORM

Autumn Show – 13th September

Entries, together with the relevant fee, should be placed in a sealed envelope marked "*Bovingdon Gardeners*" and handed to Jarman & Sons by noon on Thursday, 11th September.

ENTRY FORM

Summer Show – 28th June

Entries, together with the relevant fee, should be placed in a sealed envelope marked "*Bovingdon Gardeners*" and handed to Jarman & Sons by noon on Thursday, 26th June.

ENTRY FORM

Spring Show – 29th March

Entries, together with the relevant fee, should be placed in a sealed envelope marked "*Bovingdon Gardeners*" and handed to Jarman & Sons by noon on Thursday, 27th March.



WHITWOOD
ESTATES

COUNTRY HOMES & VILLAGE PROPERTIES

MORE PLEASE

Our ongoing success means we
urgently require more properties to
sell and let



Whitewood Estates Country Homes & Village Properties

35a, High Street, Bovington, Herts, HP3 0HJ

t: 01442 831 500

e: info@whitewoodproperties.co.uk

w: www.whitewoodproperties.co.uk

SUMMER SHOW - SATURDAY 28th JUNE

Show Secretary: Glynis Tustin: Tel 01442 833883

summer@bovingdonhortsoc.org.uk

1. THE BANKSIAN MEDAL, awarded on behalf of the RHS to the exhibitor gaining the most prize money in the Horticultural Sections I-III. The previous winners in the last two years Mike Leon and Mavis Lawrence are not eligible for the 2025 award.
2. THE BOVINGDON HORTICULTURAL SOCIETY CUP awarded to the exhibitor gaining the most points in Sections I and II.
3. NATIONAL VEGETABLE SOCIETY MEDAL awarded for the most meritorious exhibit in Section I.
4. THE MOLLIE ARONSON CUP awarded to the exhibitor gaining the most points for Rose Exhibits in Section III.
5. THE DARLEY ASH SWEET PEA CUP awarded to the exhibitor gaining the most points for Sweet Pea Exhibits in Section III.
6. A £15 VOUCHER for the best Floral Art exhibit in Section IV.
7. THE CRAWLEY CUP awarded to the exhibitor gaining the most points in Section V.
8. THE SMALL CHALLENGE CERTIFICATES awarded to the children gaining most points in Section VI, Classes 70-72.
9. THE DOUGLAS KING CUP awarded for the most meritorious photograph in Section VII.

- **Frustrated with your computer or tablet?**

- **Need help with digital photography**



I can visit your home and give you informal tuition, at your own pace, whether a beginner or moving on from the basics, using your PC or tablet and software.

Then you will be able to achieve what you want to do with your device.

Word Processing ♦ Spreadsheets ♦ Email ♦ Internet
Virus & Spam Blocking ♦ Broadband ♦ Wireless Networking
Desktop Publishing ♦ Organising and Printing Photos

Do you have old, faded or damaged, but treasured photographs?
I can provide Image Restoration, photo printing and mounting.

Ron Smith **t. 01442 832311**
e. Ron.Smith@bovingdontechnology.co.uk

SECTION I - VEGETABLES

No.	Description
1	A collection of saladings and/or salad vegetables, 3 kinds, each in individual class quantity, see Table in the Year Book. Space 2'x2' (60cmx60cm).
2	A collection of vegetables, 4 kinds, each in individual class quantity. Space 2'x2' (60cmx60cm).
3	4 potatoes, one variety
4	6 pods of peas, one variety
5	3 carrots, trimmed, one variety
6	2 cabbages
7	6 pods of broad beans
8	3 sticks of rhubarb, trimmed
9	2 lettuces
10	1 cucumber
11	3 beetroots, trimmed
12	4 different kinds of Culinary herbs, 1 vase for each provided
13	Any other unscheduled vegetable, one variety, in individual class quantity

SECTION II - FRUIT

No.	Description
14	10 gooseberries with stalks attached
15	10 sprays of black currants
16	10 sprays of red currants
17	10 raspberries with stalks attached
18	6 strawberries with stalks attached
19	Any other ripe fruit, 10 fruits or sprays with stalks attached, or 3 fruits if large

If you change your email address it is important to let us know so that you can continue to receive the Society's Updates.

editor@bovingdonhortsoc.org.uk

SECTION III – FLOWERS

No.	Description
20	3 H.T. Roses, one variety
22	A Bowl of Roses, including rose foliage, arranged for effect
23	A specimen Rose
24	3 sprays of Cluster Roses, any variety or varieties
25	3 sprays of Miniature Roses, any variety or varieties
26	Trees and/or Shrubs in bloom excl. roses, 3 kinds, 3 sprays of each
27	A vase of bulbs, corms or rhizomes, 3 stems
28	Delphinium, 1 spike
29	6 Delphinium flowers in box or pan
30	A vase of annuals, 3 varieties, 3 stems of each
30A	A vase of Alstroemerias, 3 stems
31	A vase of Alliums, 3 stems, one variety
31A	Allium, 1 stem
32	A vase of herbaceous perennials, not bulbs, corms or rhizomes, 3 varieties, 3 stems of each
32A	As 32, but 1 variety, 3 stems
33	A vase of Sweet Peas, 5 sprays, any varieties
34	2 vases of Sweet Peas, 7 sprays per vase, 2 distinct varieties
35	3 vases of Sweet Peas, 7 sprays per vase, 3 distinct varieties
36	A Bowl of mixed Sweet Peas with own foliage arranged for effect
37	6 Pansies or Violas, in box or pan
38	7 stems of Pinks or Carnations
39	5 Sweet Williams with stems
40	A Bowl of mixed garden flowers with any foliage grown in open
41	6 Fuchsia blooms, one variety, in box or pan
42	6 Fuchsia blooms, any variety, in box or pan
43	1 pot grown cactus
44	1 pot grown succulent, other than cactus
45	1 pot grown plant, foliage
46	1 pot grown plant, flowering
47	1 Fuchsia, pot grown
48	A jar of home-grown wild flowers
49	A vase of seed heads

SECTION IV - FLORAL ART

Use of Oasis is not permitted.

Novice	<i>Restricted to those who did not win a prize in the Floral Art Section of the Society's Shows of the previous 2 years</i>
50	An arrangement using 5 flowers and foliage. <i>(not exceeding 18", 46cm overall)</i>

Open	Description
51	"A Celebration of Jane Austin's 250 th Anniversary". An exhibit. <i>(Max. width and depth 24", 61cm)</i>
52	"In an English Country Garden". An arrangement. <i>(Max. width and depth 24", 61cm)</i>
53	"On the Beach" A petite arrangement in a shell <i>(not exceeding 9", 23cm overall)</i> .

SECTION V - PRESERVES AND COOKING

No.	Description
60	A jar of marmalade
61	A jar of honey
62	A bowl of cold vegetarian soup
63	5 cheese straws in a pastry ring
64	A loaf of homemade bread (bread makers allowed)
65	3 brownies
66	3 fruit scones
67	A Victoria sandwich cake filled with jam only
68	A small/individual fruit pie
69	A cold vegetarian dish

SECTION VI - CHILDREN'S EXHIBITS

Classes 70 to 72 are open to any children under 15; the child's age will be taken into consideration when judging each entry.

No.	Description
70	A garlic
71	A jar of 3 herbs, culinary or medicinal
72	A card decorated using potato prints

SECTION VII - PHOTOGRAPHS

No.	Description
75	"Wildflowers in their Habitat". <i>(A collection of four photographs, each 7"x5" max. May be mounted.)</i>
76	"Chimneys". <i>(7"x5" max. May be mounted.)</i>
77	"Mountains". <i>(7"x5" max. May be mounted.)</i>
78	"Rain". <i>(7"x5" max. May be mounted.)</i>

Visit to RHS Wisley

Date to be announced



An opportunity to see the RHS Gardens.

We will meet at the Entrance at 11:00 am. As the Society is an affiliated member of the RHS we have free group entry. After entering you are then free to enjoy the grounds and facilities as you wish. Members should make their own way to Wisley, but if anyone requires transport we can arrange this.

Winter Social Evening

Another of our very popular, entertaining evenings & the opportunity to meet other members



Friday, 14th November, 7:30 pm
Bovingdon Memorial Hall

AUTUMN SHOW - SATURDAY 14th SEPTEMBER

Show Secretary: John Walker: 01442 968593

autumn@bovingdonhortsoc.org.uk

1. THE ERNEST WRIGHT CUP awarded to the exhibitor gaining the most points in Section I and II.
2. THE VICTORY HALL CUP awarded for the best collection in Class 101.
3. THE DAHLIA CUP awarded for the most points in Section III.
4. THE ALLDAY ROOFING CUP awarded to the exhibitor gaining the most points in Section V.
5. THE OUTSPAN CUP awarded for the most points in Section VI.
6. THE BOVINGDON HORTICULTURAL SOCIETY BOWL awarded to the exhibitor gaining the most points in Section VII.
7. THE COPSE HILL CHALLENGE CUP awarded to the exhibitor gaining the most points in Section VIII, excluding Classes 185 - 188.
8. THE HORWOOD BAKERY CUP awarded for the best exhibit in Class 177.
9. THE EVA STONE CUP awarded to the most points in Classes 185 to 188.
10. Children's Certificates awarded to the winners in Section IX.

SECTION I – VEGETABLES

No.	Description
101	A collection of vegetables, 4 kinds, each in individual class quantity, see Table in this Year Book. Space 3'x2' (95cmx60cm)
101A	A collection of vegetables, 4 kinds, 1 of each. Space 2'x1' (60cmx30cm)
102	4 potatoes, white, one variety
103	4 potatoes, coloured, one variety
104	3 onions, trimmed, over 8oz/227g
105	3 onions, trimmed, under 8oz/227g
106	6 shallots
107	2 leeks, untrimmed
108	3 carrots, one variety, trimmed
109	3 stalks of chard, any colour
110	6 pods of runner beans
110A	6 pods of French beans
111	4 different kinds of Culinary herbs, 1 vase for each provided
112	3 beetroots, trimmed
113	2 cobs of corn
114	3 courgettes of the same colour

114A	3 sweet peppers (capsicums)
114B	3 chilli peppers
115	5 tomatoes over 25 mm diam. any variety
116	9 small tomatoes up to 25 mm diam. any variety
117	1 marrow fit for table (max. 15", 38cm)
118	1 cucumber
118A	3 aubergines
119	The longest runner bean
120	The heaviest potato
121	The heaviest onion
122	The heaviest pumpkin
123	The heaviest marrow
123A	The heaviest any other root vegetable
124	Any other unscheduled vegetable, in individual class qty., see p7
124A	A misshapen vegetable of any kind

SECTION II – FRUIT

No.	Description
125	4 dessert apples
126	4 cooking apples
127	10 raspberries
128	10 cultivated blackberries
129	Any other edible fruit, in individual class quantity; hard fruits 5, soft fruits 10

SECTION III - DAHLIAS

NOTE: In the following dahlia and rose classes, one or more varieties may be entered.

No.	Description
130	1 bloom, giant, any kind (over 255mm)
130A	1 bloom, large, any kind (up to 255mm)
131	1 bloom, medium decorative (up to 220mm)
132	1 bloom, medium cactus or semi-cactus (up to 220mm)
133	3 blooms, small decorative (up to 170mm)
134	3 blooms, small cactus, semi-cactus or small ball (up to 170mm)
136	3 blooms, miniature decorative, cactus or ball (up to 115mm)
139	3 blooms, pompon (up to 52mm)
140	3 blooms, any other group e.g. collarette

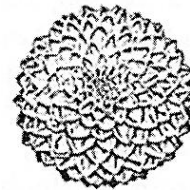
SECTION V - FUCHSIAS

No.	Description
145	6 Fuchsia blooms, one variety, in box or pan
146	6 Fuchsia blooms, 2 or more varieties, in box or pan
147	12 Fuchsia blooms, in box or pan
148	1 Fuchsia plant in a pot

Classification of Dahlias by the RHS

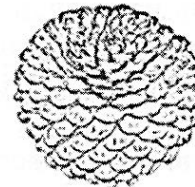
Group 5 Decorative dahlias

Decorative dahlias have fully double blooms showing no disc. The ray florets are generally broad and flat and may be involute for no more than 75 percent of their length (longitudinal axis) or slightly twisted, and usually bluntly pointed.



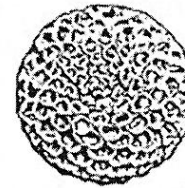
Group 6 Ball dahlias

Ball dahlias have fully double blooms, ball shaped or slightly flattened. The ray florets rounded at the tips, with margins spirally arranged and involute for at least 75 percent of the length of the florets.



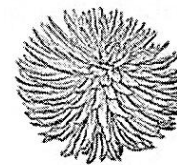
Group 7 Pompon dahlias

Pompon dahlias have fully double spherical blooms of miniature size, with florets largely involute along their length (longitudinal axis).



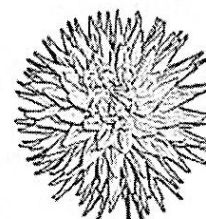
Group 8 Cactus dahlias

Cactus dahlias have fully double blooms, the ray florets are usually pointed, the majority narrow and revolute for 65 percent or more of their length (longitudinal axis) and either straight or incurving.



Group 9 Semi-cactus dahlias

Semi-Cactus dahlias have fully double blooms; the ray florets are usually pointed and revolute for more than 25 percent and less than 65 percent of their length and broad at the base and either straight or incurving.



HALO HEARING SOLUTIONS

An independent family-run business providing the highest standard of hearing care to the local community.

Free hearing assessments

Struggling to hear clearly? - Book a free test today

Latest hearing aid technology

Try the latest life changing hearing solutions

CENS shooting protection

Next generation shooting protection

Custom earmoulds

Swim, sleep or protect

Ear wax removal service

Safe and pain free relief



Call **01442 389949** or **01923 616818**
or visit us at **halohs.co.uk**

HALO HEARING SOLUTIONS

BERKHAMSTED | BOVINGDON | CHORLEYWOOD

3 Lower Kings Road • Berkhamsted • HP4 2AE | 81b High Street • Bovingdon • HP3 0HP
2 Main Parade • Chorleywood • WD3 5RB

HOME VISITS AVAILABLE UPON REQUEST

SECTION VI - OTHER FLOWERS

No.	Description
141	Chrysanthemum, 1 bloom
143	Chrysanthemum, 1 spray
150	Annuals, 6 stems, mixed variety, not Cosmos (see 162)
151	Autumn berries, 3 sprays
152	A Specimen Gladiolus
153	Herbaceous perennials, 3 kinds, not more than 3 sprays of each
154	Any flowering bulb/corm, 3 blooms
155	6 pansies or violas in a box or pan
156	A Specimen Rose
156a	3 sprays of Cluster Roses, any variety or varieties
157	A Bowl of mixed flowers with any foliage from the garden
158	Hydrangeas, 2 heads
159	A container of hardy heathers
160	6 French marigolds in box or pan
161	Begonias, 3 stems
162	Cosmos, 5 stems
163	1 flowering pot plant (<i>Max. width of exhibit 16"x16", 41cm x 41cm</i>)
164	Any other flower, 3 blooms or sprays
165	Flowering Shrubs, 2 varieties, 3 sprays of each (<i>Max. 20", 50cm wide</i>)
165A	The tallest weed

SECTION VII - FLORAL ART

Use of Oasis is not permitted.

Novice	<i>Restricted to those who did not win a 1st prize in the Floral Art Section of the Society's Shows of the previous 2 years</i>
166	An arrangement using 3 single blooms with foliage. (<i>Max 18", 46cm</i>)
Open	Description
167	"Frozen Planet". An exhibit. (<i>Max. width and depth 24", 61cm</i>)
168	"What no flowers!". An arrangement. (<i>Max. width and depth 24", 61cm</i>)
169	"Recycling". A petite arrangement using a recycled container. (<i>less than 9", 23cm overall</i>)



WHITE ROSE

INDEPENDENT FUNERAL DIRECTORS

ORGANISING THE FUNERAL OF A LOVED ONE REQUIRES TIME,
PATIENCE AND THE SYMPATHETIC ASSISTANCE OF
AN EXPERIENCED FUNERAL DIRECTOR.

White Rose Independent Funeral Directors was established to offer caring,
personal, flexible and affordable funeral services, with the necessary
knowledge and experience to help and guide you every step of the way.

We are proud to offer a truly personalised experience, the wishes of our
families are our main priority and we pride ourselves in
offering all services to meet individual needs.

Our aim is to make such a stressful time, a little easier with our
dedication and personal guidance we provide.
We would consider it an honour to support your family through this
difficult time by providing a warm and caring service.

90 HIGH STREET, BOVINGDON, HERTFORDSHIRE HP3 0HJ

TELEPHONE: 01442 953145

EMAIL: INFO@WRFUNERALS.CO.UK

WEBSITE: WWW.WRFUNERALS.CO.UK



SECTION VIII – PRESERVES, COOKING and HOME-MADE DRINKS

No.	Description
170	A jar of fruit jelly
171	A jar of chutney
172	A jar of pickled beetroot
173	3 savoury shortbread biscuits
174	A loaf of seeded homemade bread (bread makers allowed)
175	3 cookies (not biscuits)
176	3 jam tarts
177	<p>A Sticky Ginger Cake made as follows: -</p> <p>Ingredients; 200g plain flour, 1 tsp bicarbonate of soda, 1 tblsp ground ginger (more if stronger flavour is wanted), 1 tsp ground cinnamon, 100g golden syrup, 140g treacle, 100g butter, 100g dark brown or muscovado sugar, 2 large eggs, 80ml milk.</p> <p>Method; preheat oven to 180°C/160°C fan/350°F. Line a 2lb loaf tin with baking parchment/liner. Mix all dry ingredients in a bowl and make a well in the middle. Put butter, syrup, treacle and sugar in a pan, heat very gently stirring with a wooden spoon until melted. Cool. Pour this into the well to make a batter. Beat eggs with milk and add to the batter, stirring gently. Pour mixture into the tin and bake for 45 mins or until a skewer comes out cleanly. Leave the cake in the tin to cool a little, then lift out and cool on a rack. This cake is best left for a day or two to moisten and get sticky.</p>
185	Bottle of home-made labelled fruit liqueur
186	Bottle of home-made wine from home grown produce
187	Bottle of home-made beer
188	Bottle of home-made labelled non-alcoholic cordial/syrup
189	Bottle of home-made cider

SECTION IX - CHILDREN'S EXHIBITS

No.	Description
190	A pot of sunflowers. Pots, seeds and compost will be supplied in the late Spring with growing instructions.
191	Colouring a mini beast, download drawings from the website



**The Bell
79 High Street
Bovingdon
Hemel Hempstead
Hertfordshire
HP3 0HP**

01442 832800

**For All Our Menus
& Special Events
please look at our website**



**www.bellbovingdon.co.uk
info@bellbovingdon.co.uk**

JARMAN AND SONS

SALT
BLOCK SALT
PEBBLE SALT

DULUX COLOUR MIX

GRASS SEED
20kg bags or loose



Open Monday to Saturday: 8am to 5.30pm

Find us on 

Peter.Jarman4@hotmail.com

Telephone 01442 832141
44 High Street, Bovingdon, HERTS HP3 0HJ

SIGNATURE ESTATES

Turning Dreams Into Reality

At Signature Estates we can offer you a number of stylish and modern ways to sell your property, including:

- Drone Photography • Lifestyle Photos
- Local Expert • Selling Advice & Tips
- Twilight Photos • Videos

ARRANGE FOR A FREE VALUATION TODAY

Call Us
01442 976 161

Visit Us
**10 High Street,
Bovingdon, HP3 0HG**



Scan the
QR code
to visit our
website

bovingdon@signaturestates.co.uk | www.signaturestates.co.uk



rightmove.co.uk



onTheMarket.com

Zoopla.co.uk